

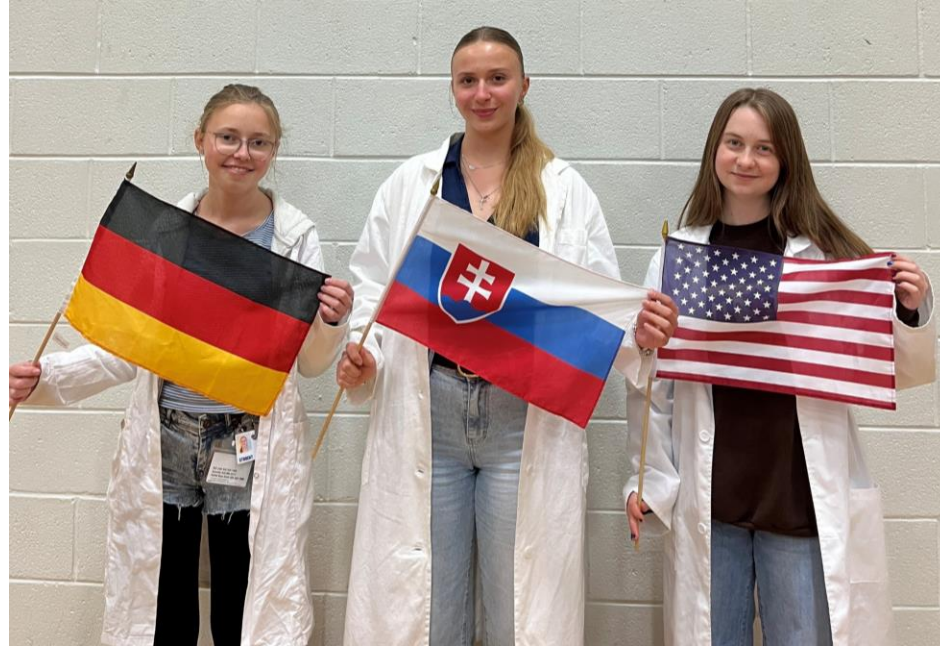
Food Investigation about Genetical Modified Crops

Results from Workgroup 6

Tested food: Popcorn

Hartsville (USA) June 1st – June 5th 2026

GROUP 6



Maya Sturm

Germany

Johanna-Wittum-Schule
in Pforzheim



Laurel Hardy

United States

SCGSSM
In Hartsville



Daniela Olejarova

Slovakia

Gymnasium sv.
Frantiska Asisskeho in
Levoca

Tested food: **Popcorn**

Grown: **not written**

GMO signed: **no**

Country of origin: **Germany**

Brand: **Alnatura**

Mass: **500g**

Calorific value: **344 kcal per 100g**

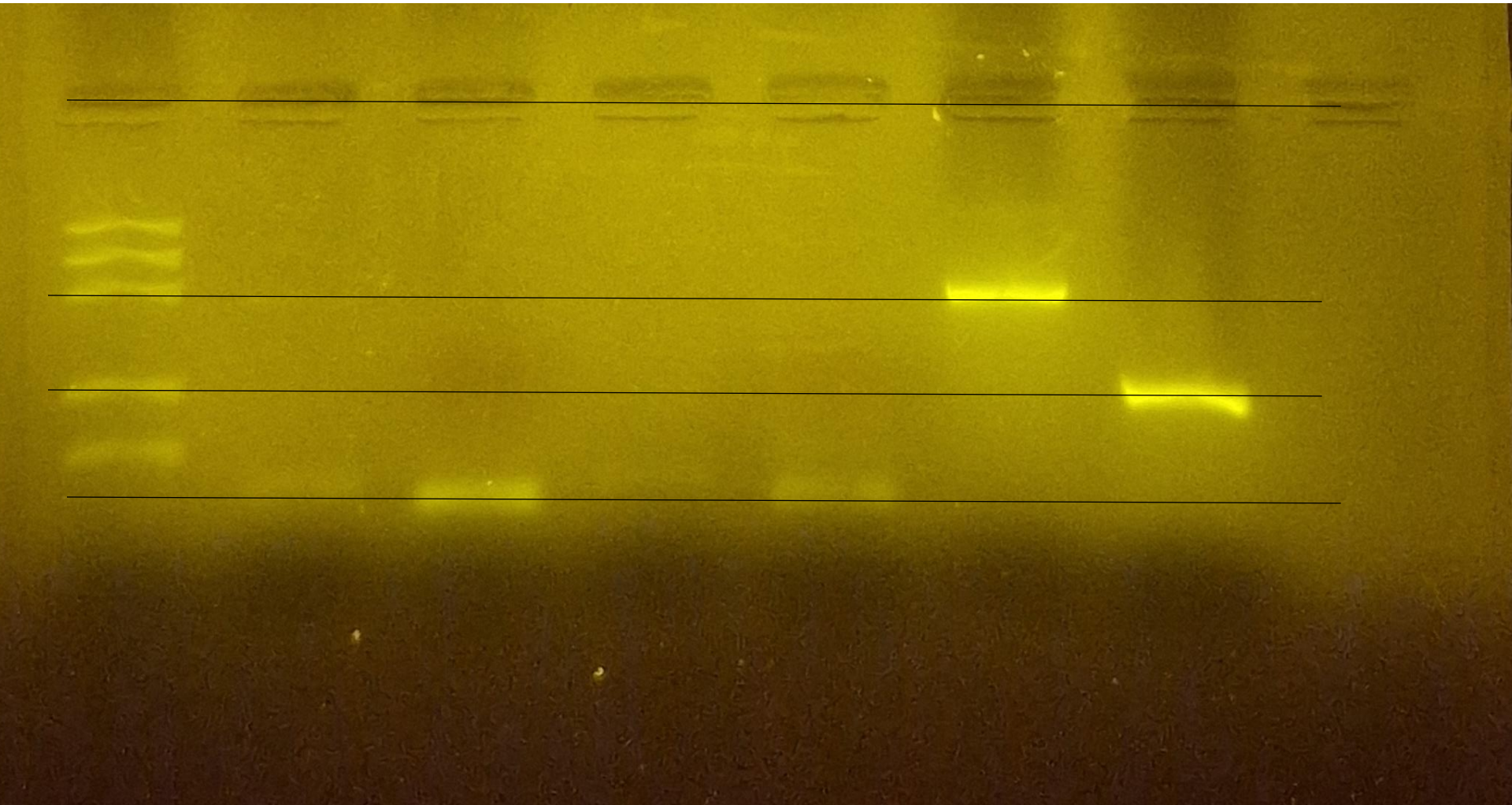
Durchschnittliche Nährwerte pro 100 g / Apport nutritionnel moyen par 100 g	
Energie / Énergie	1454 kJ (344 kcal)
Fett / Matières grasses	3,8 g
- davon gesättigte Fettsäuren / dont acides gras saturés	0,6 g
Kohlenhydrate / Glucides	64 g
- davon Zucker / dont sucres	1,4 g
Ballaststoffe / Fibres alimentaires	9,7 g
Eiweiß / Protéines	8,7 g
Salz / Sel	0,02 g



Observation: Gel Pattern of Electrophoresis

1. -control PMM
2. -control GMM
3. Tested FOOD PMM
4. Tested FOOD GMM
5. +control PMM
6. +control GMM

M 1 2 3 4 5 6



PS II (465 bp)

CaMV or/and NOS (213 bp)

Rest of primers (15-25 bp)

Rest of dNTPs

Evaluation:

1. Mondamin Corn Starch – plant origin
2. Mondamin Corn Starch – not genetic modified
3. TESTED FOOD – Popcorn – plant origin
4. TESTED FOOD – Popcorn – not genetic modified
5. Positive control – plant origin
6. Positive control – genetic modified

Evaluation:

Length Estimation of Bands in the Gel by Calibration Curve

Length detection of PCR products

DNA - Length

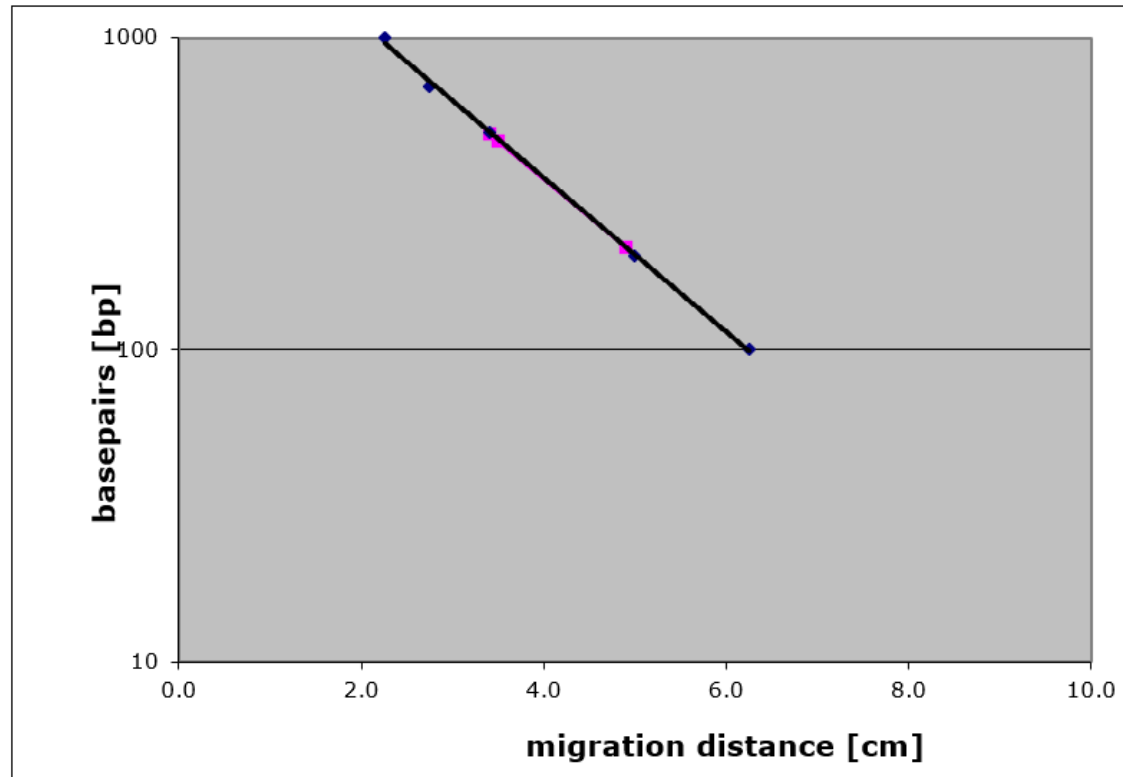
migration distance basepairs (bp)

2.3	1000
2.8	700
3.4	500
5.0	200
6.3	100

PCR-products

migration distance basepairs (bp)

Lane 1	3.5	465
Lane 5	3.4	492
Lane 6	4.9	213



Conclusion

Our data is inconclusive

Test food is not modified.

Length of gene fragment PSII: 465 bp

Length of modification is 213 bp

Modification is done by regulation sequence of
CaMV-Promoter and NOS-Terminator